

# **Ecological site NX119X01Y018**

## **Poorly Drained Flood Plain**

Last updated: 8/30/2024  
Accessed: 05/21/2025

---

### **General information**

**Provisional.** A provisional ecological site description has undergone quality control and quality assurance review. It contains a working state and transition model and enough information to identify the ecological site.

### **MLRA notes**

Major Land Resource Area (MLRA): 119X–Ouachita Mountains

Major Land Resource Area 119, the Ouachita Mountains, is in Arkansas and Oklahoma. This MLRA is about 11,885 square miles (30,800 square kilometers). Hot Springs National Park and the Ouachita National Forest reside in this MLRA.

This MLRA is located in the Ouachita Mountains section of the Ouachita Province of the Interior Highlands. The steep mountains are underlain by folded and faulted sedimentary and metamorphic rocks. Most of the valleys are narrow and have steep gradients while wide terraces and flood plains border the Ouachita River. Elevation ranges from 130 feet (40 meters) in the bottomlands to 2,670 feet (810 meters) on the mountain peaks.

These steep mountains are underlain by folded and faulted formations, dominantly of shale and sandstone. Ordovician-age shale and sandstone are included in the Collier Shale, Crystal Mountain Sandstone, and Womble Shale. Mississippian-age shale, sandstone, novaculite, and chert are included in the Arkansas Novaculite and the Stanley Shale. Pennsylvanian-age shale, slate, quartzite, and sandstone are included in the Jackfork Sandstone, Johns Valley Shale, and upper Atoka Formations. Alluvial deposits of silt, sand, and gravel are on the wide terraces and flood plains that border the Ouachita River.

The dominant soil orders in this MLRA are Ultisols and Inceptisols. The soils in this MLRA have a thermic soil temperature regime, a udic soil moisture regime, and mixed or siliceous mineralogy.

# Ecological site concept

The Poorly Drained Flood Plain ecological site is in river valleys along flood plains and terraces. The soils associated with this site are very deep and formed in alluvium derived from sandstone and shale. This site has slopes between 0 and 1 percent with elevations ranging from 120 to 1,200 feet (36 to 360 meters). Important abiotic characteristics associated with this site are very poor drainage, a low pH (acidic), and rare to occasional flooding for very brief to brief periods.

## Associated sites

NX119X01Y019	<b>Rarely Flooded Terrace</b> This ecological site is differentiated from the Poorly Drained Flood Plain Ecological Site by landscape position.
--------------	----------------------------------------------------------------------------------------------------------------------------------------------------

## Similar sites

NX119X01Y012	<b>Drainageway</b> This ecological site is differentiated from the Poorly Drained Flood Plain Ecological Site are an irregular decrease in organic matter throughout the soil profile.
--------------	-------------------------------------------------------------------------------------------------------------------------------------------------------------------------------------------

Table 1. Dominant plant species

Tree	(1) <i>Liquidambar</i> (2) <i>Platanus</i>
Shrub	(1) <i>Hamamelis</i> (2) <i>Alnus</i>
Herbaceous	(1) <i>Panicum virgatum</i> (2) <i>Andropogon gerardii</i>

## Legacy ID

F119XY018AR

## Physiographic features

This ecological site is in river valleys along flood plains and terraces. This site has slopes between 0 and 1 percent. Elevations range from 120 to 1,200 feet (36 to 360 meters). Runoff class varies from high to very high, with no ponding. Rare to occasional flooding events occur for brief to long durations.

Table 2. Representative physiographic features

Landforms	(1) River valley > Terrace (2) Flood plain
Runoff class	High to very high
Flooding duration	Brief (2 to 7 days) to long (7 to 30 days)
Flooding frequency	Rare to occasional
Ponding frequency	None
Elevation	120–1,200 ft
Slope	0–1%
Water table depth	1–24 in
Aspect	Aspect is not a significant factor

## Climatic features

This ecological site is characterized by hot summers, cool winters, and mild spring and fall temperatures. Mean annual precipitation is 54 inches. The average frost-free period is 182 days, and the average freeze-free period is 207 days. The highest precipitation occurs in May (6.4 inches), and the lowest occurs in August (3.4 inches). Precipitation varies greatly across this ecological site, with increasing precipitation from west to east. The warmest month of the year is August (93°F average high), and the coolest is January (26°F average low).

Thunderstorms and heat waves are common and occur frequently during summer months. Catastrophic storm events, such as tornados, ice-storms, floods, and hail-storms are also known to occasionally occur within this ecological site. According to the Oklahoma Water Resource Board, drought occurs on 5 to 10 year cycles. The Environmental Protection Agency (EPA) predicts that droughts will become more severe throughout Arkansas due to longer periods without rain and an increase in very hot days (EPA, 2016).

Data was provided by the Alum Fork, Battiest, Wilburton, Murfreesboro, Waldron, and Hot Springs climate stations. Site specific data should be obtained by accessing the database provided by the National Centers for Environmental Information (<https://www.ncdc.noaa.gov/cdo-web/search>).

**Table 3. Representative climatic features**

Frost-free period (characteristic range)	176-194 days
Freeze-free period (characteristic range)	206-217 days
Precipitation total (characteristic range)	51-56 in
Frost-free period (actual range)	173-198 days
Freeze-free period (actual range)	198-228 days

Precipitation total (actual range)	49-56 in
Frost-free period (average)	186 days
Freeze-free period (average)	212 days
Precipitation total (average)	53 in

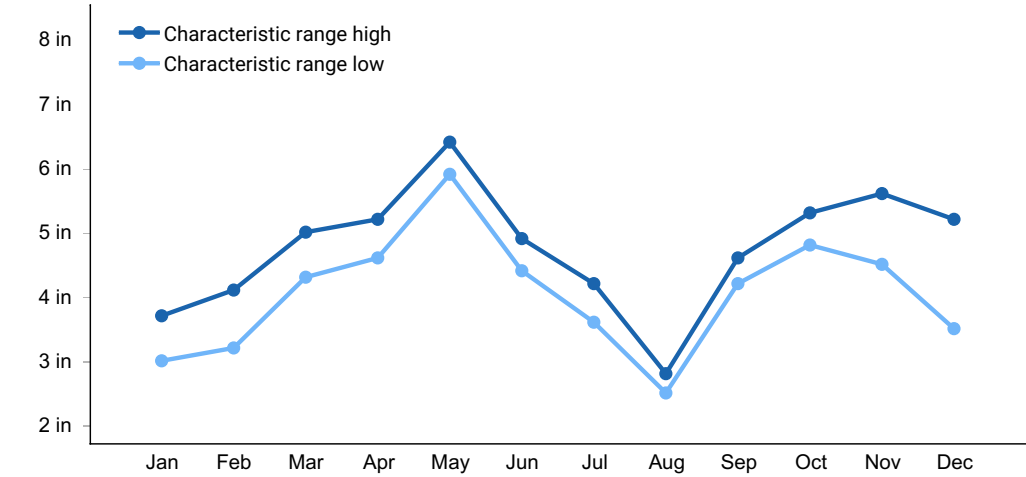


Figure 1. Monthly precipitation range

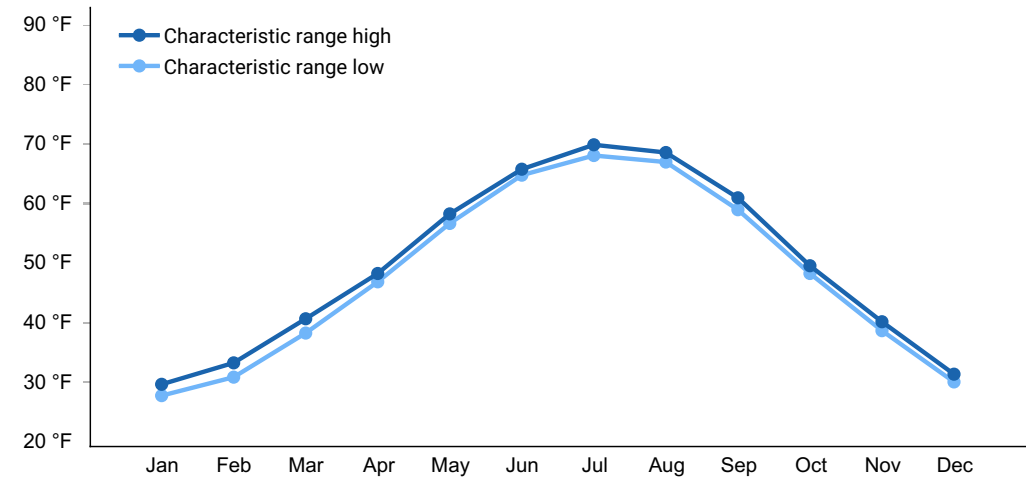


Figure 2. Monthly minimum temperature range

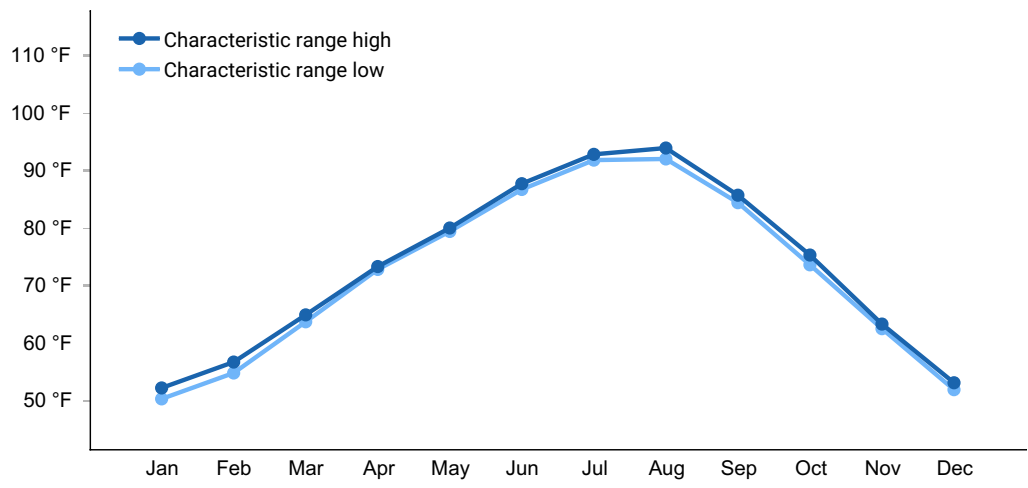


Figure 3. Monthly maximum temperature range

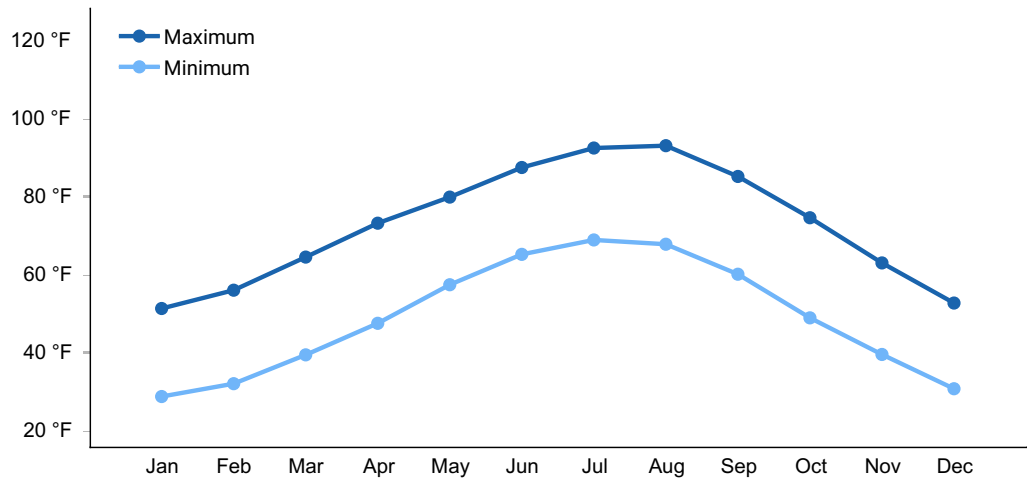


Figure 4. Monthly average minimum and maximum temperature

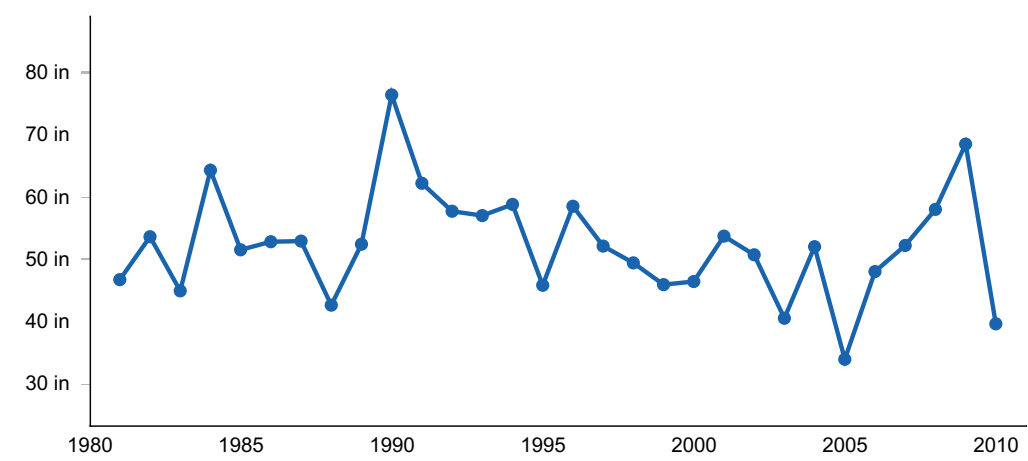


Figure 5. Annual precipitation pattern

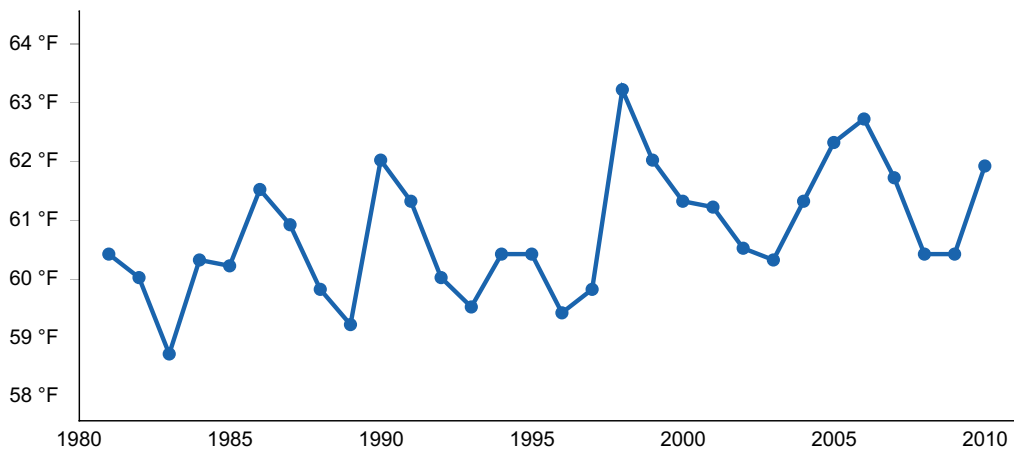


Figure 6. Annual average temperature pattern

### Climate stations used

- (1) TUSKAHOMA [USC00349023], Tuskahoma, OK
- (2) MCGEE CREEK DAM [USC00345713], Atoka, OK
- (3) MOUNT IDA ASOS [USW00053921], Mount Ida, AR
- (4) BLAKELY MTN DAM [USC00030764], Mountain Pine, AR
- (5) NIMROD DAM [USC00035200], Perryville, AR

### Influencing water features

This ecological site has a water table within 6 inches (15 cm) of soil surface in the winter and spring. This ecological site is also subject to rare or occasional flooding (1 to 5 times in 100 years or greater than 5 to 50 times in 100 years) for very brief or brief periods (4 to 48 hours or 2 to 7 days).

### Wetland description

This ecological site is not significantly influenced by wetlands.

### Soil features

The soils associated with this ecological site are formed in alluvium derived from sandstone and shale. These soils are very deep, very poorly to poorly drained, and have a moderately slow to moderate permeability class. A silt surface texture is common. Important abiotic characteristics associated with this site are very poor drainage and a low pH (acidic).

The soil series associated with this site are Cupco and Woodall.

Table 4. Representative soil features

Parent material	(1) Alluvium—sandstone and shale
-----------------	----------------------------------

Surface texture	(1) Silt
Drainage class	Very poorly drained to poorly drained
Permeability class	Moderately slow to moderate
Soil depth	60–80 in
Surface fragment cover ≤3"	0%
Surface fragment cover >3"	0%
Available water capacity (Depth not specified)	5.9–9.1 in
Soil reaction (1:1 water) (Depth not specified)	3.5–6.5
Subsurface fragment volume ≤3" (Depth not specified)	0%
Subsurface fragment volume >3" (Depth not specified)	0%

## Ecological dynamics

The Poorly Drained Flood Plain reference state consists of a bottomland hardwood forest that is periodically flooded throughout the year. The common trees species for this state are sweetgum, sycamore, hickory, oak, hackberry, elm, and loblolly pine (Eldredge, 1937).

Flooding is a major ecosystem disturbance on this ecological site. Ecosystems are affected differently by flooding depending on the duration, time of year, and water stagnation. Species diversity has been shown to decrease with increased flooding duration. Nutrients and seeds are transported and distributed throughout the landscape during flooding events (Smith and Callahan, 1983). Flooding during the dormant season does not have negative effects on species diversity and growth (Bedinger, 1979).

Fire has some influence on this ecological site during dry years. High precipitation throughout the year will decrease fire behavior due to proximity with riparian areas. The historical average fire return interval was likely between 3 and 25 years (Guyette and Spetich, 2003; Hallgren, DeSantic, and Burton, 2012). These wildfires would occur naturally through lightning strikes, but the majority were probably ignited by anthropogenic sources (DeSantis, Hallgren, and Stahle, 2010).

Climate related events, such as hail-storms, tornados, thunderstorms, and extreme precipitation, occur on these sites. Hail-storms can reduce canopy size, increase litter deposition, and increase tree bark removal. When paired with other disturbances, such as fire, the effects on tree species were much greater than in areas not affected by hail-storms (Gower et al., 2015). Tornados have been shown to change plant community compositions in savanna ecosystems, favoring hardwoods and eliminating softwoods (Liu et al., 1997). Thunderstorms greatly effect ecosystem dynamics. Thunderstorms generally

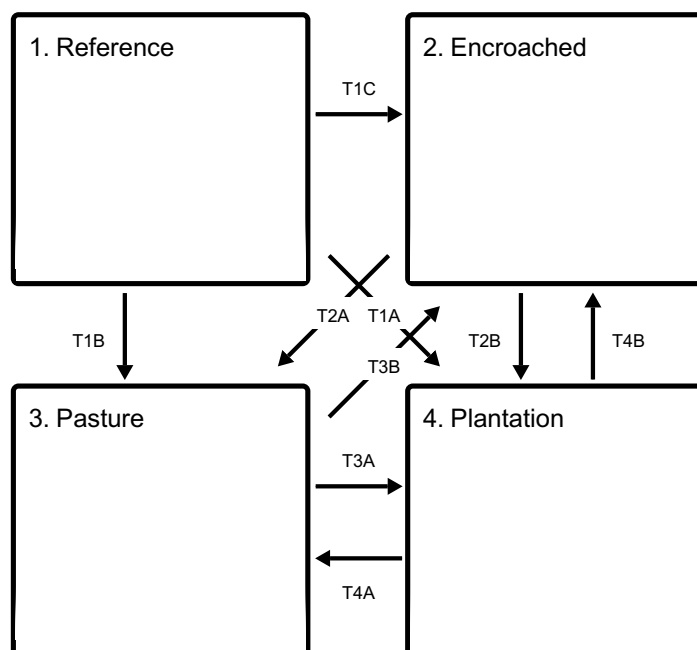
occur during summer months but can occur during every season. If a fire is started by a lightning strike, there will be different effects in the ecosystem depending on the season (Hiers, Wyatt, and Mitchell, 2000).

Grazing and farming can occur on this ecological site. Changes to the ecological dynamics are proportional to the intensity of livestock grazing and can be accelerated by overgrazing (Angerer, Fox, and Wolfe, 2013; Kohl, 2016). For example, desirable grasses and forbs are repeatedly grazed by livestock, weakening, and potentially killing or replacing these species with less desirable species (Smith, 1940).

A state and transition model has been created to explain this Ecological Site. However, sparse data availability only allowed basic principles to be explored and a small number of species to be recorded. More data will be collected to provide a greater understanding of the ecological dynamics, as well as the resources consumption and distribution.

## State and transition model

### Ecosystem states



**T1C** - Absence of fire or alternative brush management, woody species encroachment.

**T1B** - Tree removal, mechanical and chemical woody vegetation suppression, tillage, introduce annual or perennial forage species.

**T1A** - Tree removal, brush management, plantation tree establishment and management.

**T2A** - Tree removal, mechanical and chemical woody vegetation suppression, tillage, introduce annual or perennial forage species.

**T2B** - Woody species removal, plantation tree planting, prescribed fire.

**T3B** - Lack of management or abandonment.

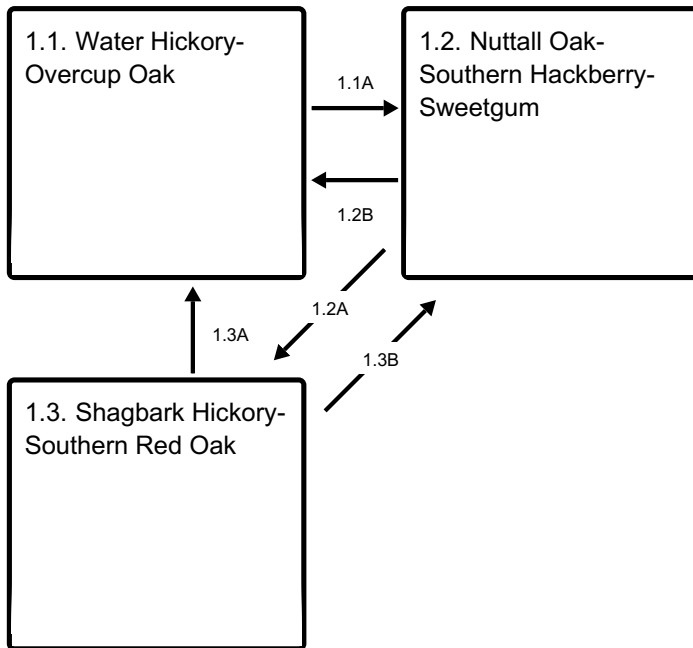
**T3A** - Forage species suppression, brush management, plantation tree establishment and management.

**T4B** - Lack of management or abandonment.

**T4A** - Woody species removal, prescribed fire, seeding, and grazing.



### State 1 submodel, plant communities



**1.1A** - Less water, decreased flooding

**1.2B** - More water, increased flooding

**1.2A** - Less water, decreased flooding

**1.3A** - More water, increased flooding

**1.3B** - More water, increased flooding

## State 1 Reference

The Reference State is representative of the natural range of variability without major anthropogenic influences. Drivers: Flooding duration and frequency, climate (decadal scale), insect and disease presence or establishment, wildlife grazing or browsing, and fire frequency. Feedbacks: Water tolerant tree species dominate this ecological site. Flooding events limit what species can grow and survive inundation.

**Characteristics and indicators.** The reference state consists of a bottomland hardwood forest that is periodically flooded throughout the year.

### Dominant plant species

- oak (*Quercus*), tree
- hybrid hickory (*Carya*), tree
- hackberry (*Celtis*), tree
- sycamore (*Platanus*), tree
- pine (*Pinus*), tree
- sweetgum (*Liquidambar*), tree
- switchgrass (*Panicum virgatum*), grass

## **Community 1.1**

### **Water Hickory-Overcup Oak**

Water Hickory and Overcup Oak.

## **Community 1.2**

### **Nuttall Oak- Southern Hackberry- Sweetgum**

Nuttall Oak, Southern Hackberry, and Sweetgum.

## **Community 1.3**

### **Shagbark Hickory- Southern Red Oak**

Shagbark Hickory and Southern Red Oak.

## **Pathway 1.1A**

### **Community 1.1 to 1.2**

This pathway is characterized by periods of lower precipitation and decreased flooding.

## **Pathway 1.2B**

### **Community 1.2 to 1.1**

This pathway is characterized by periods of higher precipitation and increased flooding.

## **Pathway 1.2A**

### **Community 1.2 to 1.3**

This pathway is characterized by periods of lower precipitation and decreased flooding.

## **Pathway 1.3A**

### **Community 1.3 to 1.1**

This pathway is characterized by periods of higher precipitation and increased flooding.

## **Pathway 1.3B**

### **Community 1.3 to 1.2**

This pathway is characterized by periods of higher precipitation and increased flooding.

## **State 2**

### **Encroached**

The encroached state is dominated by woody species. Driver: Absence of fire, seed

dispersal by wildlife, climate (decadal scale), and canopy density. Feedbacks: Woody species dominate the ecological site, shading herbaceous species. As herbaceous species are outcompeted for resources, fire frequency decreases. Nutrient and water cycling are controlled by woody species.

**Characteristics and indicators.** The Encroached State consists of many woody species, especially eastern redcedar, where there is significant canopy closure. Time and fire frequency determine the community phases and species abundance and variation. As the woody canopy increases the hydrology of the site is altered. The increased canopy intercepts most of the precipitation. Understory species have less available water for growth and must compete with an extensive overstory root system.

### **Dominant plant species**

- eastern redcedar (*Juniperus virginiana*), tree
- oak (*Quercus*), tree
- hybrid hickory (*Carya*), tree
- beech (*Fagus*), tree

## **State 3 Pasture**

The Pasture State is characterized by the dominance of improved forage species. The quality and quantity of forb, grass, and legume species within this state will depend on the level of management inputs including seeding, weed management, and land uses. Species of both warm-season and cool-season grasses are feasible for these sites. Drivers: Mechanical soil disturbance and seed planting, climate (decadal scale), seed dispersal, and wildlife or livestock grazing or browsing. Feedbacks: Land managers use mechanical and chemical equipment to increase forage. Inputs of fertilizer and brush management are required to maintain high productivity. Wildlife and livestock grazing and browsing decrease the amount of available forage.

**Characteristics and indicators.** The Pasture State consists of species that are grown for specific management goals, mainly livestock grazing. Common pasture species include buffalograss, western wheatgrass, little bluestem, sideoats grama, Bermudagrass, and bahiagrass. Quality and quantity of forb, grass, and legume species within this state depend on the level of management inputs (seeding, weed management, and land uses). Species of both warm-season and cool-season grasses are feasible for these sites.

### **Dominant plant species**

- Bermudagrass (*Cynodon dactylon*), grass
- red clover (*Trifolium pratense*), grass

## **State 4 Plantation**

The plantation state is characterized by the planting of merchantable trees species. The most common species for a plantation is loblolly pine. Community phases differ by tree type (softwood or hardwood) and the harvesting process. Drivers: Prescribed fires, pest management, vegetation management, canopy density. Feedbacks: Timber harvesting. Planted tree species dominate this ecological site, shading out other vegetation. Anthropogenic management decreases competition with other species and assists in growth.

**Characteristics and indicators.** A plantation state consists of tree species that are planted and managed to maximize the production of merchantable timber. The most common plantation species is loblolly pine, followed by hardwood trees. Community phases differ by tree type (softwood or hardwood), timber harvest method, management, and reforestation practices.

### **Dominant plant species**

- loblolly pine (*Pinus taeda*), tree
- oak (*Quercus*), tree

## **Transition T1C**

### **State 1 to 2**

Trigger: The absence of wildfire allows woody species to increase and outcompete herbaceous species for nutrients, water, and sunlight. Slow variables: Increased competition for sunlight, nutrients, and moisture resources. Increased overstory competition results in decreased vigor and reproductive capacity of herbaceous understory species. Thresholds: Nutrient cycles shift from grass-and-leaf dominance to leaf-and-needle dominance. Increased woody canopy cover alters hydrologic cycles, potentially increasing runoff, decreasing infiltration, and increasing precipitation interception to woody species.

## **Transition T1B**

### **State 1 to 3**

Trigger: Mechanical and chemical woody vegetation suppression, tillage, and annual forage species introduction. Slow Variables: Increase production and management of forage species. Thresholds: Changes in soil properties, such as structure, organic matter, and nutrient cycling, as well as changes in type and frequency of disturbance.

## **Transition T1A**

### **State 1 to 4**

Trigger: Native tree removal, mechanical and chemical woody vegetation suppression, introduce plantation tree species. Slow Variables: Increased production and management of plantation species. Thresholds: Changes in soil properties such as structure, organic

matter, and nutrient cycling as well as changes in type and frequency of disturbance.

## **Transition T2A**

### **State 2 to 3**

Trigger: Mechanical and chemical woody vegetation treatment, tillage, and forage species introduction. Slow Variables: Increase production and management of forage species.

Thresholds: Changes in soil properties, such as structure, organic matter, and nutrient cycling, as well as changes in type and frequency of disturbance.

## **Transition T2B**

### **State 2 to 4**

Trigger: Native tree removal, mechanical and chemical woody vegetation suppression, introduce plantation tree species. Slow Variables: Increased production and management of plantation species. Thresholds: Changes in soil properties such as structure, organic matter, and nutrient cycling as well as changes in type and frequency of disturbance.

## **Transition T3B**

### **State 3 to 2**

Triggers: Lack of management or abandonment. Slow Variables: Increase in the establishment and size of woody species. Thresholds: Woody species dominate ecological processes. This reduces vigor and reproduction of understory species due to shading and increased competition for soil moisture, nutrients, and sunlight.

## **Transition T3A**

### **State 3 to 4**

Trigger: Forage species removal and suppression, mechanical and chemical woody vegetation suppression, introduce and manage plantation tree species. Slow Variables: Increased production and management of plantation species. Thresholds: Changes in soil properties such as structure, organic matter, and nutrient cycling as well as changes in kind and frequency of disturbance.

## **Transition T4B**

### **State 4 to 2**

Triggers: Lack of management or abandonment. Slow Variables: Increase in the establishment and size of woody species. Thresholds: Woody species dominant ecological processes resulting in reduced vigor and reproduction of herbaceous species in the understory due to shading and increased competition for soil moisture, nutrients, and sunlight.

## **Transition T4A**

### **State 4 to 3**

Trigger: Tree removal, mechanical and chemical woody vegetation suppression, tillage, introduce annual or perennial forage species. Slow Variables: Increase production and management of forage species. Thresholds: Changes in soil properties such as structure, organic matter, and nutrient cycling as well as changes in type and frequency of disturbance.

## **Additional community tables**

### **Animal community**

Common wildlife species in this area include coyote, whitetail deer, bobcat, beaver, raccoon, otter, skunk, opossum, muskrat, mink, cottontail, armadillo, gray squirrel, and turkey. The species of fish in the area include largemouth bass, bluegill, redear sunfish, channel catfish, spotted bass, white bass, crappie, flathead catfish, sucker, bullhead, bowfin, and gar.

### **Hydrological functions**

Following are the estimated withdrawals of freshwater by use in this MLRA:

Public supply— surface-water, 26.5%; ground-water, 0.3%

Livestock— surface-water, 9.6%; ground-water, 0.3%

Irrigation— surface-water, 0.6%; ground-water, 0.0%

Other— surface-water, 62.6%; ground-water, 0.0%

The total withdrawals average 155 million gallons per day (585 million liters per day). About 1 percent is from ground-water sources, and 99 percent is from surface-water sources. The high precipitation, perennial streams, and reservoirs provide abundant water. Several large reservoirs are used for water storage, flood control, and recreation. In the valleys, small ponds and springs are the main sources of water for domestic use and for livestock. The surface-water is typically of very good quality in this mountainous area.

In the valleys, shallow wells in alluvium are the main sources of water for domestic use and for livestock. None of the bedrock aquifers in Arkansas or Oklahoma occur in this area. The quality of the shallow ground-water is very similar to the quality of the water in the streams and rivers. The ground-water is suitable for drinking.

### **Recreational uses**

Mountain biking, camping, fishing, hiking, horseback riding, hunting, mineral prospecting, nature viewing, off-highway vehicle riding, and water activities can all be enjoyed throughout this MLRA on public land where permitted and on private land where allowed.

The Ouachita National Forest is throughout this MLRA, encompassing nearly 1.8 million acres of public land.

## **Wood products**

Public and private timberland comprise large areas throughout this MLRA. Loblolly pine is the most popular species to harvest and produces products such as lumber, pulpwood, posts, and poles. Hardwood species are also harvested and used to produce lumber, flooring, and pulpwood.

## **Other products**

Poultry production is a major industry throughout the MLRA. Small grains, soybeans, and hay are major crops.

## **References**

- Angerer, J., W. Fox, and J. Wolfe. 2016. Land Degradation in Rangeland Ecosystems. Biological and Environmental hazards, Risks, and Disasters. Academic Press.
- Cannon, J.B. and J.S. Brewer. 2013. Effects of Tornado Damage, Prescribed Fire, and Salvage Logging on Natural Oak Regeneration in a Xeric Southern USA Coastal Plain Oak and Pine Forest.
- Carey, J. 1992. *Quercus stellata*, Fire Effects Information System. U.S. Department of Agriculture, Forest Service, Rocky Mountain Research Station. Fire Sciences Laboratory.
- Clark, J.A. and K.R. Covey. 2012. Tree species richness and the logging of natural forests: A meta analysis. *Forest Ecology and Management*. Elsevier, Yale School of Forestry and Environmental Studies. 146–153.
- DeSantis, R.D., S.W. Hallgreen, and D.W. Stahle. 2010. Historic Fire Regime of an Upland Oak Forest in South Central North America. *Fire Ecology*. USDA Forest Service, Northern Research Station, Saint Paul, Minnesota.
- Eldredge, I. 1937. *Forest Resources of Southern Arkansas*. Southern Forest Experiment Station. US Forest Service.
- Engle, D. and T. Bidwell. 2001. The response of central North American prairies to

seasonal fire. *Range Management* 54:2–10.

Engle, D.M. 2017. Fire in North American Tallgrass Prairies. *Weed Technology* 5:247–248.

Gower, K., J. Fontaine, C. Birnbaum, and N. Enright. 2015. Sequential Disturbance Effects of Hailstorms and Fire on Vegetation in a Mediterranean-Type Ecosystem. *Ecosystems* 18:1121–1134.

Guldin, J.M. and M.W. Fitzpatrick. 1991. Comparison of Log Quality from Even-Aged and Uneven-Aged Loblolly Pine Stands in South Arkansas. *Southern Journal of Applied Forestry* 15:10–17.

Guyette, R.P. and M. A. Spetich. 2003. Fire History of Oak-Pine Forests in the Lower Boston Mountains, Arkansas, USA. *Forest Ecology and Management*. Elsevier. 463–474.

Guyette, R.P., M.A. Spetich, and M.C. Stambaugh. 2006. Historic fire regime dynamics and forcing factors in the Boston Mountains, Arkansas, USA. *Forest Ecology and Management* 234:293–304.

Hallgren, S.W., DeSantis. R. D., and J.A. Burton. 2012. Fire and vegetation Dynamics in the Cross Timbers Forests of South-Central North America. *Proceedings of the 4th Fire in Eastern Oak Forests Conference*. USDA Forest Service General Technical Report NRS-P-102, Springfield, Missouri. 52–66.

Heikens, A. 2007. Glade Communities of the Ozark Plateaus Province. Pages 220–230 in *Savannas, Barrens, and Rock Outcrop Plant Communities of North America*.

Hiers, K., R. Wyatt, and R. Mitchell. 2000. The effects of fire regime on legume reproduction in longleaf pine savannas: is a season selective?. *Oecologia* 125:521–530.

Jenks, J.A., Leslie, R.L. Lochmiller, M.A. Melchiors, and McCollum. 1996. Competition in sympatric white-tailed deer and cattle populations in southern pine forests of Oklahoma and Arkansas, USA. *Acta Theriologica* 41:287–306.



- Klos, R.J. and G.G. Wang. 2009. Drought impact on forest growth and mortality in the southeast USA: an analysis using Forest Health and Monitoring data. *Ecological Applications* 19:699–708.
- Kohl, M., P. Krausman, K. Kunkel, and D. Williams. 2013. Bison Versus Cattle: Are They Ecologically Synonymous. *Rangeland Ecology and Management* 66:721–731.
- Linzon, S.N. 1962. Hail Damage to White Pine and Other Trees. *The Forestry Chronicle*. Canadian Institute of Forestry.
- Liu, C., J. Glitzenstein, P. Harcombe, and R. Knox. 1997. Tornado and fire effects on tree species composition in a savanna in the Big Thicket National Preserve, southeast Texas, USA. *Forest Ecology and Management* 91:279–289.
- Owens, D. 2005. First report of a geological reconnaissance of the northern counties of Arkansas, made during the years 1857 and 1858. Arkansas Geological Survey.
- Siemann, E., J.A. Carrillo, C.A. Gabler, R. Zipp, and W.E. Rogers. 2009. Experimental test of the impacts of feral hogs on forest dynamics and processes in the southeastern US. *Forest Ecology and Management*. Elsevier. 546–553.
- Smith, C. 1940. The Effects of Overgrazing and Erosion Upon the Biota of the Mixed-Grass Prairie of Oklahoma. *Ecology*. Wiley. 381–397.
- Spetich, M. and H. He. 2008. Oak decline in the Boston Mountains, Arkansas, USA: Spatial and temporal patterns under two fire regimes. *Forest Ecology and Management* 254:454–462.
- Varner, J.M., D.R. Gordon, F.E. Putz, and J.K. Hiers. 2005. Restoring Fire to Long-Unburned *Pinus palustris* Ecosystems: Novel Fire Effects and Consequences for Long-Unburned Ecosystems. *Restoration Ecology* 13:536–544.
- Warrillow, M. and P. Mou. 1999. Ice Storm Damage to Forest Tree Species in the Ridge and Valley Region of Southwestern Virginia. *The Journal of the Torrey Botanical Society*. Torrey Botanical Society. 147–158.

Zou, C., D. Twidwell, and C. Bielski. 2018. Impact of Eastern Redcedar Proliferation on Water Resources in the Great Plains USA- Current State of Knowledge.

## **Other references**

Arkansas Soil Survey  
Ouachita National Forest  
Arkansas State Parks  
The Nature Conservancy  
US Fish and Wildlife Service  
Encyclopedia of Arkansas  
United States Forest Service Southern Research Station  
NatureServe  
Oklahoma Water Resource Board  
National Centers For Environmental Information  
University of Arkansas  
Oklahoma State University  
Arkansas Department of Forestry  
Oklahoma Department of Forestry

## **Contributors**

Trevor Crandall, Ecological Site Specialist

## **Approval**

Dean Stacy, 8/30/2024

## **Acknowledgments**

Larry Gray  
Elizabeth Gray  
Erin Hourihan

## **Rangeland health reference sheet**

Interpreting Indicators of Rangeland Health is a qualitative assessment protocol used to determine ecosystem condition based on benchmark characteristics described in the Reference Sheet. A suite of 17 (or more) indicators are typically considered in an assessment. The ecological site(s) representative of an assessment location must be known prior to applying the protocol and must be verified based on soils and climate. Current plant community cannot be used to identify the ecological site.

Author(s)/participant(s)	
Contact for lead author	
Date	08/30/2024
Approved by	Dean Stacy
Approval date	
Composition (Indicators 10 and 12) based on	Annual Production

## Indicators

**1. Number and extent of rills:**

---

**2. Presence of water flow patterns:**

---

**3. Number and height of erosional pedestals or terracettes:**

---

**4. Bare ground from Ecological Site Description or other studies (rock, litter, lichen, moss, plant canopy are not bare ground):**

---

**5. Number of gullies and erosion associated with gullies:**

---

**6. Extent of wind scoured, blowouts and/or depositional areas:**

---

**7. Amount of litter movement (describe size and distance expected to travel):**

---

**8. Soil surface (top few mm) resistance to erosion (stability values are averages - most sites will show a range of values):**

---

**9. Soil surface structure and SOM content (include type of structure and A-horizon color**

and thickness):

---

10. **Effect of community phase composition (relative proportion of different functional groups) and spatial distribution on infiltration and runoff:**
- 

11. **Presence and thickness of compaction layer (usually none; describe soil profile features which may be mistaken for compaction on this site):**
- 

12. **Functional/Structural Groups (list in order of descending dominance by above-ground annual-production or live foliar cover using symbols: >>, >, = to indicate much greater than, greater than, and equal to):**

Dominant:

Sub-dominant:

Other:

Additional:

---

13. **Amount of plant mortality and decadence (include which functional groups are expected to show mortality or decadence):**
- 

14. **Average percent litter cover (%) and depth ( in):**
- 

15. **Expected annual annual-production (this is TOTAL above-ground annual-production, not just forage annual-production):**
- 

16. **Potential invasive (including noxious) species (native and non-native). List species which BOTH characterize degraded states and have the potential to become a dominant or co-dominant species on the ecological site if their future establishment and growth is not actively controlled by management interventions. Species that**

become dominant for only one to several years (e.g., short-term response to drought or wildfire) are not invasive plants. Note that unlike other indicators, we are describing what is NOT expected in the reference state for the ecological site:

---

17. **Perennial plant reproductive capability:**

---